

Installation Instructions

Thyssen F9

door operator

conversion

Documentation history

No.	Ver.	Status	Processed by
1	1.0	05.04.06	Rau
2	1.1	26.11.15	JE
3	1.2	03.01.20	CSA



Fordern Sie die Umbauanleitung **auf Deutsch** an,
indem Sie den QR Code einscannen.

Langer & Laumann Ing.-Büro GmbH
Wilmsberger Weg 8
48565 Steinfurt
Germany

Phone: +49 (2552) 92 7 91 0

E-mail: info@LuL-Ing.de

Web: www.LuL-Ing.de

© 2020 Langer & Laumann Ingenieurbüro GmbH All rights reserved

All rights for these assembly instructions and the product described therein are reserved for **Langer & Laumann Ingenieurbüro GmbH** or their suppliers. In accordance with the laws of copyright protection, these assembly instructions may not be copied in whole or in part without written approval of **Langer & Laumann Ingenieurbüro GmbH**, except as part of normal use of the product or to create a back-up copy. However, this exceptional provision does not extend to copies created for third parties or that are sold or transferred to third parties in any other manner. The whole of the material acquired (including all back-up copies) may, however, be transferred to third parties or made available on loan. According to the provisions of the law, preparing a translation also falls under the definition of copying.

Langer & Laumann Ingenieurbüro GmbH assumes no warranty or guaranty for the content of these assembly instructions. It declines any legal guaranty regarding the marketability or suitability for a specific purpose Langer & Laumann Ingenieurbüro GmbH is not responsible for errors in these assembly instructions or for direct or indirect damages associated with delivering, performing or using these assembly instructions. **Langer & Laumann Ingenieurbüro GmbH** reserves the right to revise these assembly instructions from time to time without advance notification and to make changes to the content.

File: 1.20.91973_Umbauanleitung_Thyssen_F9_auf_TSG_V1.2_en.docx
Printing date: 03/01/2020 09:20:00

Table of contents

1	Essential information	4
1.1	Value of assembly instructions	4
1.2	Copyright protection	4
1.3	Instructions in the assembly manual	4
1.4	Informal activities performed by the fitter	4
1.5	Requirements for assembly personnel	4
2	Activity performed	5
3	Advantages	5
4	Conversion instructions	5
5	Illustrations	6
	Contact	8

1 Essential information

1.1 Value of assembly instructions

The product assembly instructions are provided by the manufacturer or supplier to provide the information required by the customer or fitter to ensure proper, safe and reliable assembly. These brief assembly instructions serve to clarify the basic steps of mechanical assembly and to highlight the main differences in door cross-bar for door variants with 2 panels, telescoping and 2 panels central. The electrical connection, commissioning and settings of the TSG are explicitly not part of these instructions.

1.2 Copyright protection

We reserve all rights for this technical documentation. It may not be duplicated, made accessible to third parties or otherwise used in an unauthorised manner without our prior consent. Any changes require our explicit and prior written consent.

1.3 Instructions in the assembly manual

All instructions in the assembly manual must be followed without exception.


1.4 Informal activities performed by the fitter

The system fitter is personally responsible for participating in a training course. He or she must inform the manufacturer/supplier without delay of any missing or defective parts in the delivery.


1.5 Requirements for assembly personnel

Persons responsible for installation and maintenance must be instructed regarding generally applicable safety and labour health requirements. They must be familiar with Langer&Laumann products. Installation tools must be fully functional and measuring instruments must be subject to continuous monitoring.

2 Activity performed

Replacement of Thyssen F9 door drive with a  **Langer & Laumann Ing. Büro GmbH TSG 400 door drive with toothed belt drive.**

3 Advantages

- Very **economical** package
- Replacement of faulty electronics or motor with TSG400 from  **Langer & Laumann Ing. Büro GmbH**
- **Just a few** mechanical attachments are required
- All materials required are included with the conversion package
- The conversion is **very quick** and **easy** to perform
- Electrical wiring can also be performed by **less experienced fitters**
- **No hand-held** terminal is required for setting parameters. All parameters can easily be adjusted on the device
- Measurements can be performed very **easily**
- The conversion kit is generally available as **warehouse inventory**

4 Conversion instructions

1. Remove the old drive.
2. Solve the existing belt.
3. The complete drive unit with pulleys to the new exchange.
4. The old toothed belt tension again and mount the motor brackets Langer & Laumann.
5. Endless toothed belt and motor mounting and clamping.
6. Track control.
7. TSG calibrate electronics. It should be noted that both in the open and in the closed position, a fixed stop is present. For further commissioning and electrical connection is made at this point to the manual of the TSG.

5 Illustrations



Fig. 1: ThyssenF9 before conversion

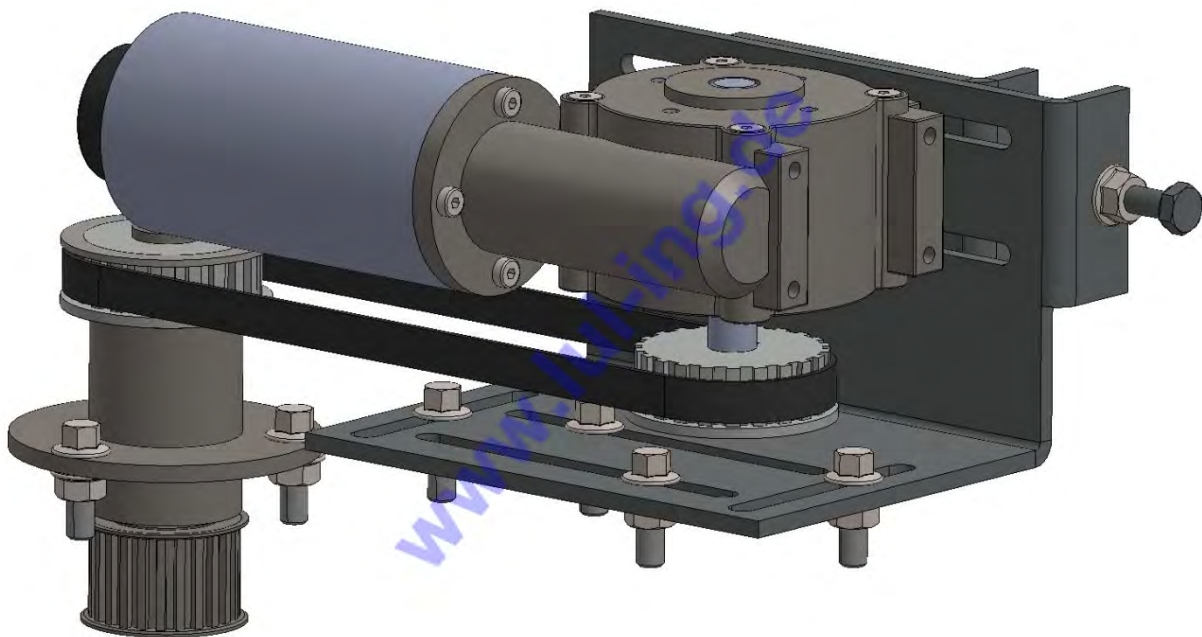


Fig. 2: Thyssen F9 after conversion with TSG

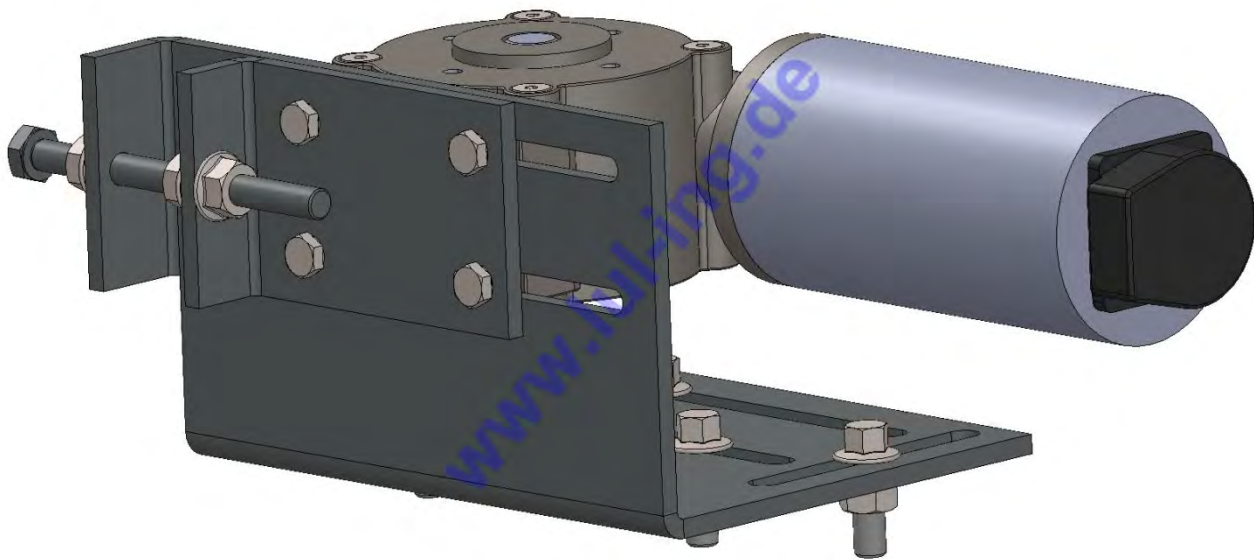


Fig. 3: Thyssen F9 after conversion with TSG

Contact

If you have questions or are not certain about something, we can be reached at the following address:

Langer & Laumann Ing.-Büro GmbH
Wilmsberger Weg 8
48565 Steinfurt
Germany

Phone: +49 (2552) 92 7 91 0

E-mail: info@LuL-Ing.de

Web: www.LuL-Ing.de