

# Conversion instructions

## Otis MRDS

with device series

## Door control unit

## TSG

**Documentation history**

No.	Ver.	Date	Processed by
1	1.0	11.02.11	CSA
2	1.1	29.06.15	RAU
3	1.2	03.12.15	JE
4	1.3	30.12.19	CSA



Fordern Sie die Umbauanleitung **auf Deutsch** an, indem Sie den QR Code einscannen.



Demandez les instructions d'instruction de montage **en français**, en scannant le code QR.

**Langer & Laumann Ing.-Büro GmbH**  
**Wilmsberger Weg 8**  
**48565 Steinfurt**  
**Germany**

Phone: +49 (2552) 92 7 91 0

E-mail: [info@LuL-Ing.de](mailto:info@LuL-Ing.de)

Web: [www.LuL-Ing.de](http://www.LuL-Ing.de)

© 2019 Langer & Laumann Ingenieurbüro GmbH All rights reserved

All rights for these operating instructions and the product described therein are reserved for **Langer & Laumann Ingenieurbüro GmbH** or their suppliers. In accordance with the laws of copyright protection, these operating instructions may not be copied in whole or in part without written approval of **Langer & Laumann Ingenieurbüro GmbH**, except as part of normal use of the product or to create a back-up copy. However, this exceptional provision does not extend to copies created for third parties or that are sold or transferred to third parties in any other manner. The whole of the material acquired (including all back-up copies) may, however, be transferred to third parties or made available on loan. According to the provisions of the law, preparing a translation also falls under the definition of copying.

**Langer & Laumann Ingenieurbüro GmbH assumes no warranty or guaranty for the content of these operating instructions. It declines any legal guaranty regarding the marketability or suitability for a specific purpose. Langer & Laumann Ingenieurbüro GmbH is not responsible for errors in these operating instructions or for direct or indirect damages associated with delivering, performing or using these operating instructions. Langer & Laumann Ingenieurbüro GmbH reserves the right to revise these operating instructions from time to time without advance notification and to make changes to the content.**

File: 1.20.92050\_Umbauanleitung\_Otis\_MRDS\_auf\_TSG\_V1.3\_en.docx  
 Printing date: 12/30/2019 10:54:00 AM

---

## **Table of contents**

1	Essential information _____	4
1.1	Value of assembly instructions _____	4
1.2	Copyright protection _____	4
1.3	Instructions in the assembly manual _____	4
1.4	Informal activities performed by the fitter _____	4
1.5	Requirements for assembly personnel _____	4
2	Activity performed _____	5
3	Advantages _____	5
4	Tools required _____	5
5	Parts list _____	5
6	Conversion instructions _____	6
7	Illustrations _____	7
8	Contact _____	13

# **1 Essential information**

## ***1.1 Value of assembly instructions***

The product assembly instructions are provided by the manufacturer or supplier to provide the information required by the customer or fitter to ensure proper, safe and reliable assembly. These brief assembly instructions serve to clarify the basic steps of mechanical assembly. The electrical connection, commissioning and settings of the TSG are explicitly not part of these instructions.

## ***1.2 Copyright protection***

We reserve all rights for this technical documentation. It may not be duplicated, made accessible to third parties or otherwise used in an unauthorised manner without our prior consent. Any changes require our explicit and prior written consent.

## ***1.3 Instructions in the assembly manual***

All instructions in the assembly manual must be followed without exception.

## ***1.4 Informal activities performed by the fitter***

The system fitter is personally responsible for participating in a training course. He or she must inform the manufacturer/supplier without delay of any missing or defective parts in the delivery.

## ***1.5 Requirements for assembly personnel***



Persons responsible for installation and maintenance must be instructed regarding generally applicable safety and labour health requirements. They must be familiar with Langer&Laumann products. Installation tools must be fully functional and measuring instruments must be subject to continuous monitoring.

## 2 Activity performed

Replacement of the Otis MRDS door drive with a  **Langer & Laumann Ing. Büro GmbH TSG door drive.**

The purpose of the conversion is to replace the existing Otis MRDS drive with a TSG drive.

## 3 Advantages

- Very economical package.
- Quick and easy replacement of the existing door drive with a TSG from  **Langer & Laumann Ing. Büro GmbH .**
- **Just a few** mechanical attachments are required.
- All necessary parts are included with delivery.
- Conversion can be performed **very quickly** and **easily**.
- The electrical wiring can also be performed by **less experienced fitters**.
- **No hand-held** terminal is required for setting parameters. All parameters can easily be adjusted on the device.
- **Measurements can be performed very easily**.
- The conversion kit is available from  **Langer & Laumann Ing. Büro GmbH** as **warehouse inventory**.

## 4 Tools required

Metal drill bits 6, 9, and 11 mm  
 Fork wrenches size 8, 10, 13, 17  
 Screwdriver  
 Side cutter

## 5 Parts list

Item	Article number	Name	Quantity
1	1.20.60060	Hat-shaped combination bracket	2
2	1.20.60003	Deflection roller with clamping station	1
3	1.20.60030	TSG stop kit buffer stop	1
4	1.20.92010	Mounting plate for hat-shaped combination bracket	2
5	1.20.92020	Door panel carrier, rectangular	4
6	1.20.92030	Connection plate for door panel carrier	2
7	1.20.60005	TSG toothed belt lock	2
8	8.20.60002.40	TSG toothed belts	4,0
9	8.20.40000/1	Motor, Large Left/Right and gearbox 24V/2.8A/1:15	1
10		Various screws, washers, nuts	1
11	8.20.00101	TSG electronics in housing	1
12	1.20.92050	Documentation for conversion to Otis MRDS	1
13	1.20.91000	TSG manual	1

## 6 Conversion instructions



**NOTE:**

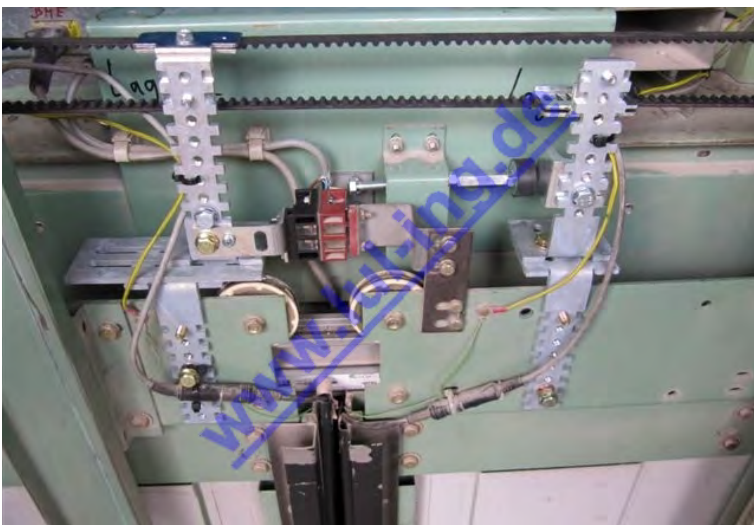
The order of assembly listed here is simply a recommendation. There is no claim of completeness.

1. Disassembly of the existing drive.
2. Assembly of the TSG drive on the hat-shaped combination bracket.
3. Assembly of unit on the mounting plate for hat-shaped combination bracket
4. Assembly of the TSG counter roller with clamping station on hat-shaped combination bracket.
5. Assembly of unit on the mounting plate for hat-shaped combination bracket.
6. Assembly of the two rectangular door panel carriers together.
7. Assembly of the door panel carriers on the fast door panel and assembly of the TSG toothed belt lock on the TSG door panel carrier.
8. Assembly of the TSG drive unit and deflection roller unit on the door machine. The TSG drive can be mounted on the left or right side of the door machine (regardless of the opening direction of the door machine).
9. Set the TSG toothed belt in place. The toothed belt lock must be positioned at the height of the toothed belt or toothed wheels (must line up). Use the clamping station to tension the toothed belt.
10. Position the end stops or buffer stops. The door panel carrier must be able to reach the end stops when the door is completely closed or open.
11. Check the travel path.
12. A second safety circuit contact must be installed for a door that opens centrally so that both door panels can be queried.
13. Measure the TSG electronics unit. Make certain there is a fixed stop in both the open and closed positions. For the remainder of commissioning and electrical connection process, please refer to the TSG manual.

## 7 Illustrations



*Fig. 1: Otis MRDS before conversion*



*Fig. 2: TSG in Otis MRDS, after conversion*



Fig. 3: TSG drive side



Fig. 4: TSG drive side





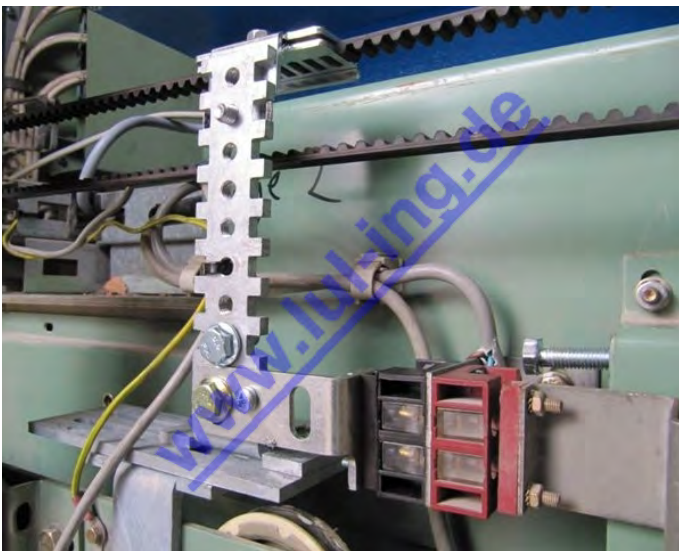
*Fig. 5: TSG deflection roller*



*Fig. 6: TSG deflection roller*



*Fig. 7: TSG deflection roller*



*Fig. 8: TSG door panel carrier*



*Fig. 9: TSG door panel carrier*

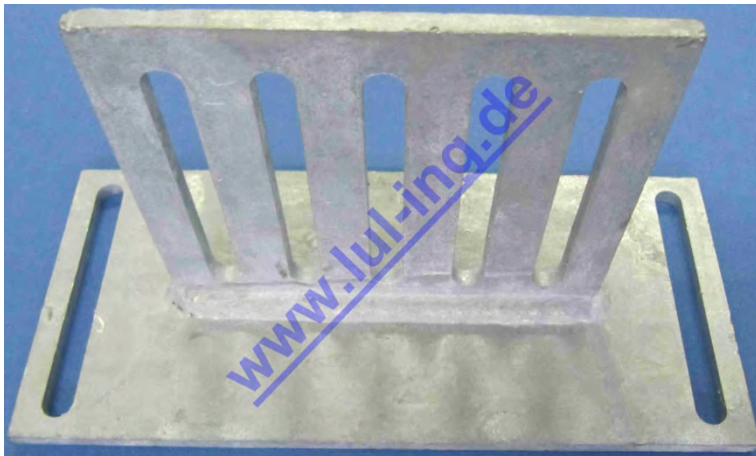


Fig. 10: 1.20.92010 Mounting plate for hat-shaped combination bracket



Fig. 11: 1.20.92020 TSG door panel carrier, rectangular

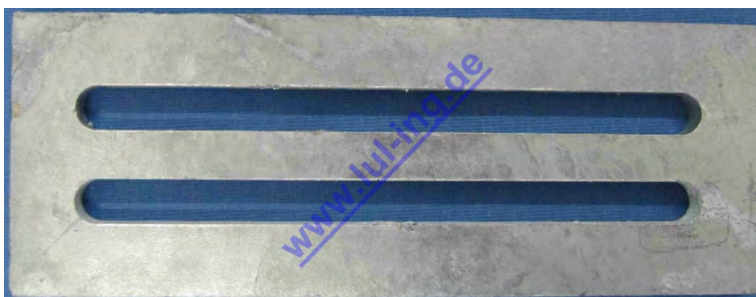


Fig. 12: 1.20.92030 TSG connection plate for door panel carrier

## 8 Contact

If you have questions or are not certain about something, we can be reached at the following address:

**Langer & Laumann Ing.-Büro GmbH**  
**Wilmsberger Weg 8**  
**48565 Steinfurt**  
**Germany**

Phone: +49 (2552) 92 7 91 0

E-mail: [info@LuL-Ing.de](mailto:info@LuL-Ing.de)

Web: [www.LuL-Ing.de](http://www.LuL-Ing.de)